

Installing Carlson 2016

[Workstation Installation](#) - Step-by-step instructions. For network licensing server installation instructions, please see http://www.carlsonsw.com/support/knowledge-base/?action=display_topic&topic_id=55.

[What's New](#) - Complete list of improvements for Carlson 2016.

[Registration](#)

Documentation - For full documentation, including context sensitive help, press the F1 key at any time while running Carlson 2016.

Fixes - A complete list of fixes for Carlson 2016 can be found on at the Carlson Software [Knowledge Base](#).

[Support](#) - List of all support resources.

System Requirements

Carlson's system requirements are no greater than that of the AutoCAD ® version you are running. See your AutoCAD installation guide for the minimum system configuration. It is always recommended that you use the highest performance PC possible.

For detailed information on system requirements please see this page:

<http://www.carlsonsw.com/support/system-requirement/>

Carlson 2016 will operate with the following versions of CAD:

Both 32-bit and 64-bit Windows (for details on Windows support for specific AutoCAD version, please refer [here](#)):

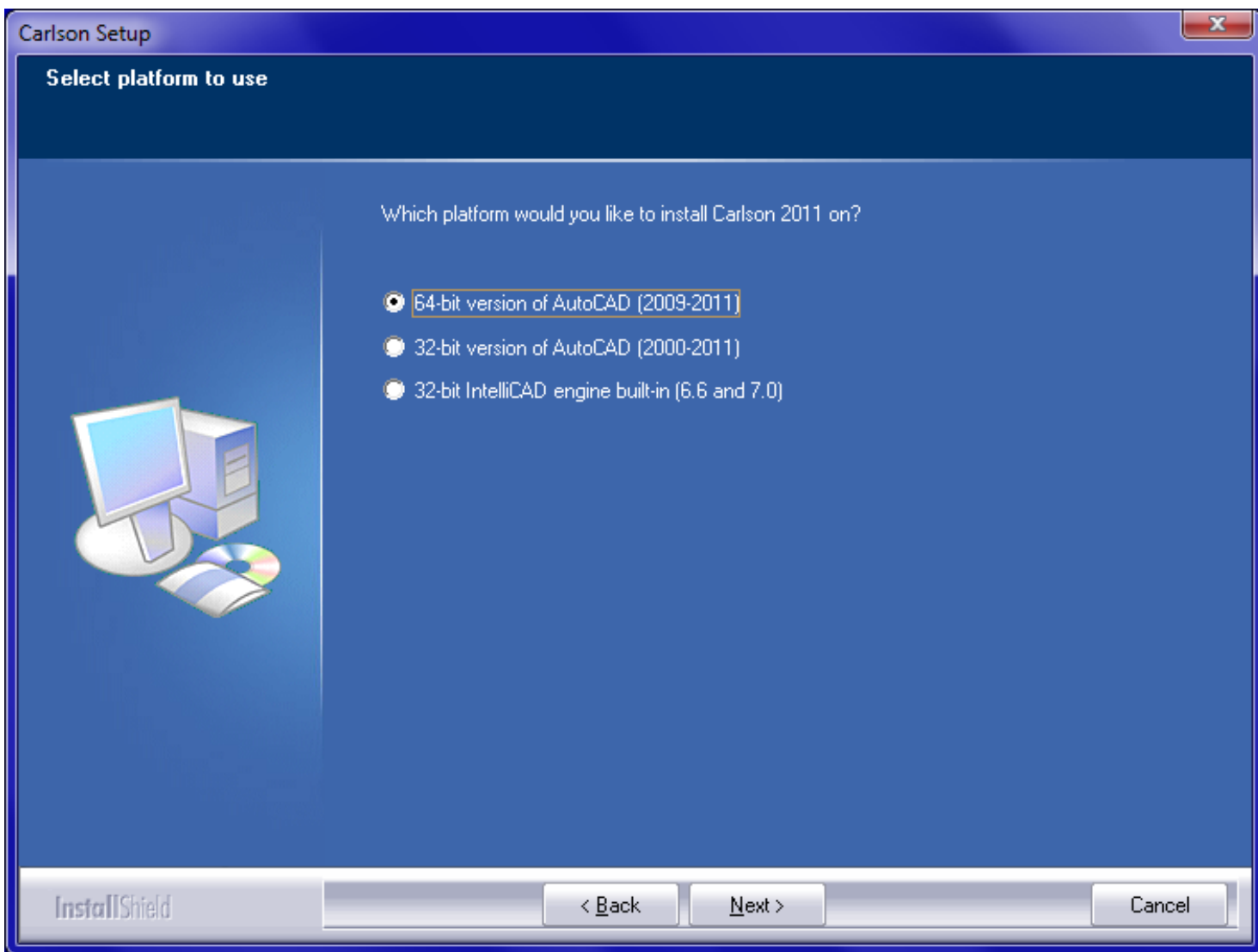
- AutoCAD 2010-2016
- AutoCAD Map 2010-2016
- Civil 3D 2010-2016
- IntelliCAD 8.1 built-in (supports Windows Vista through Windows 10)

Note: Carlson requires a minimum screen resolution of 1024x768.

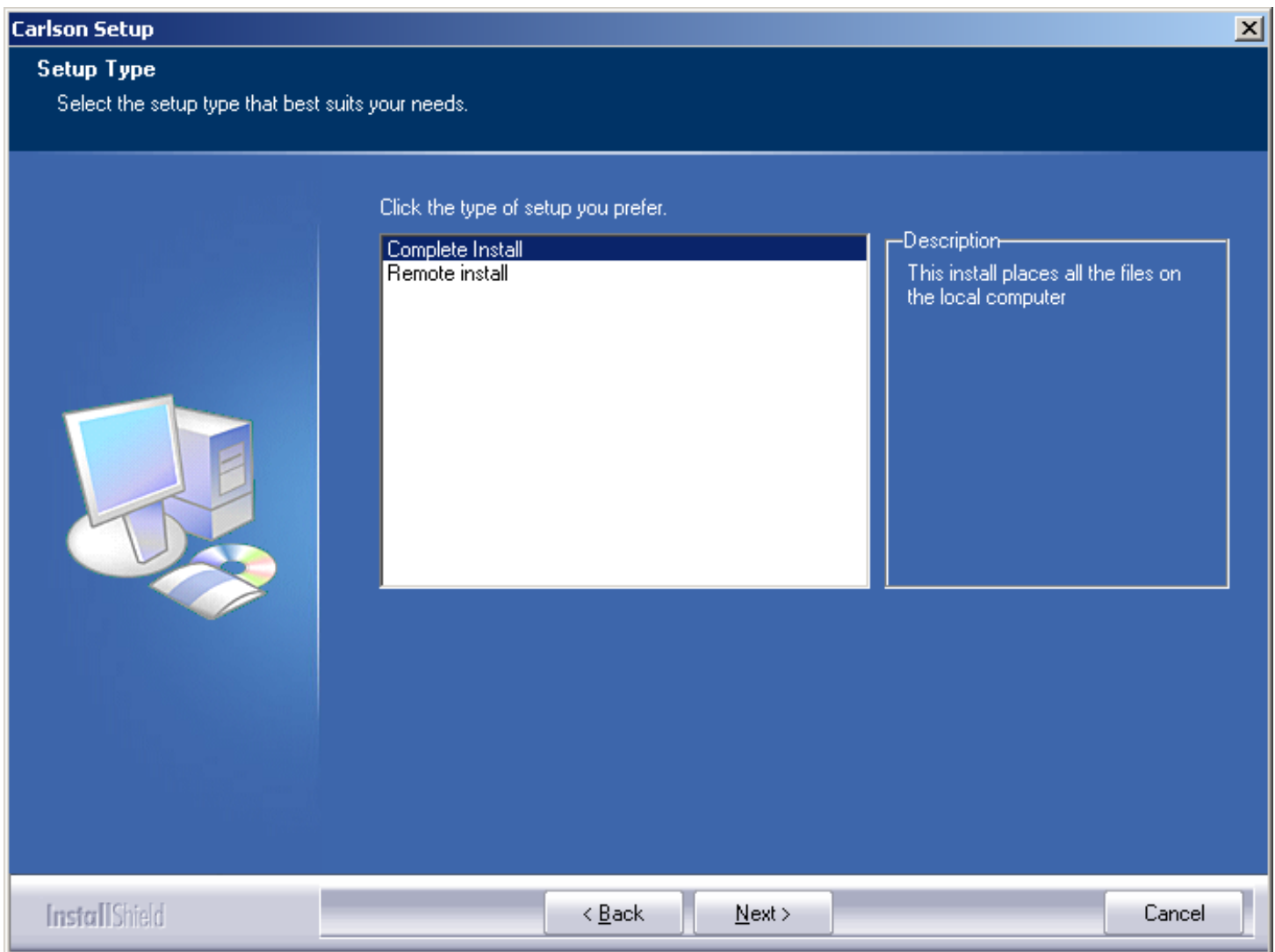
The older AutoCADs or IntelliCAD will install on 64-bit Windows as 32-bit application and Carlson 2016 will install and run properly on these CADs as 32-bit application.

Workstation Installation

- Insert the CD and the program will initialize automatically. If the setup program does not automatically begin, click Start, select Run, type D:\Launch.exe and click OK.
- After the program begins, select **Install Carlson 2016**.

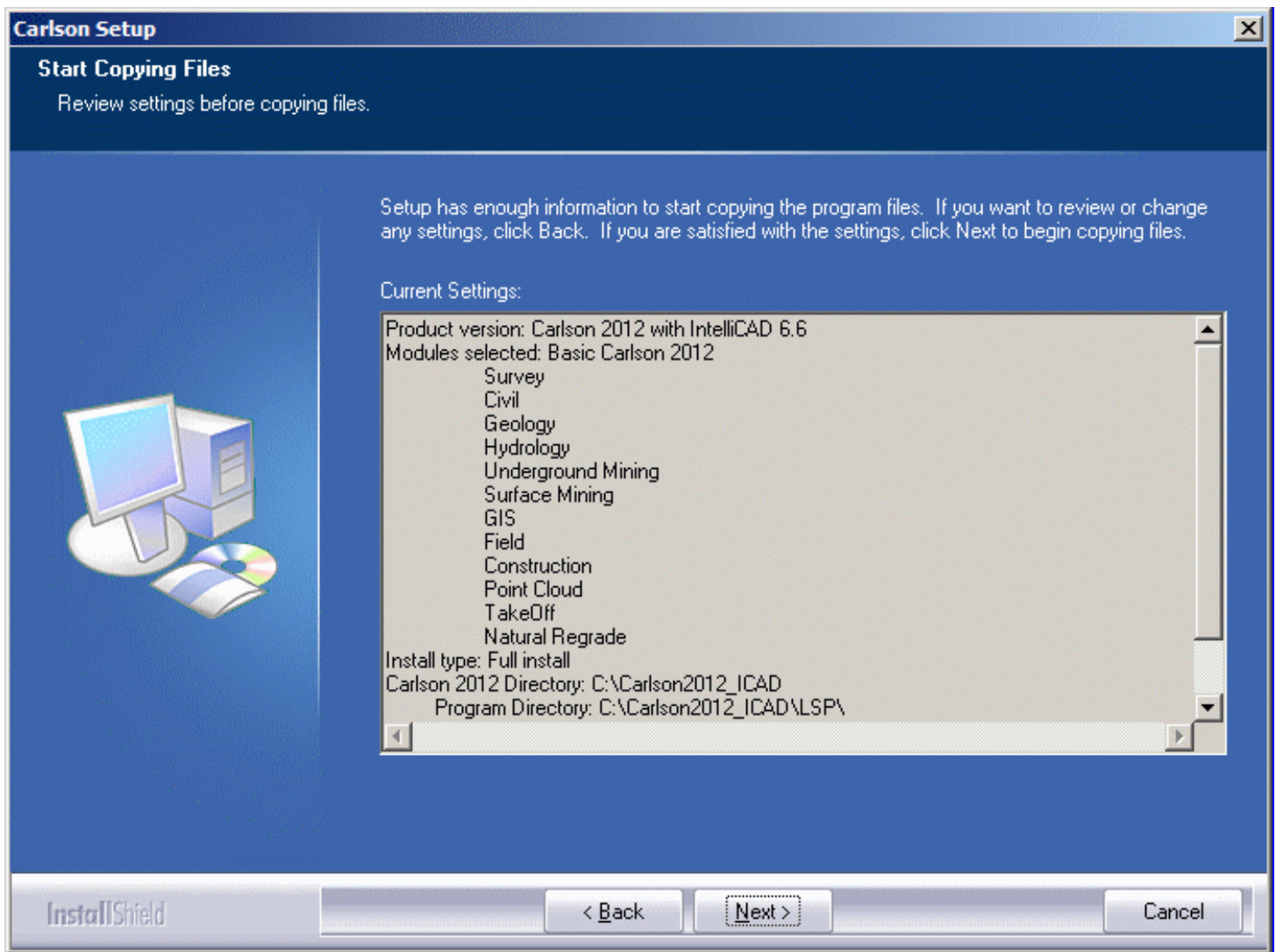


- Select which version of CAD you are installing Carlson 2016 on. Users of 64-bit Windows will get additional prompt asking whether they intend to use a 64-bit or 32-bit kind of CAD application.
- During the installation process, you will be prompted for your serial number. This can be found either on the CD case or on your distribution sheet. **IMPORTANT: Each legal copy of Carlson 2016 has its own serial number.**
- Specify which folder you prefer to install Carlson 2016 in. In case of using multiple versions of AutoCAD, please select individual folders of Carlson 2016 for each version.
- Select Install Type:

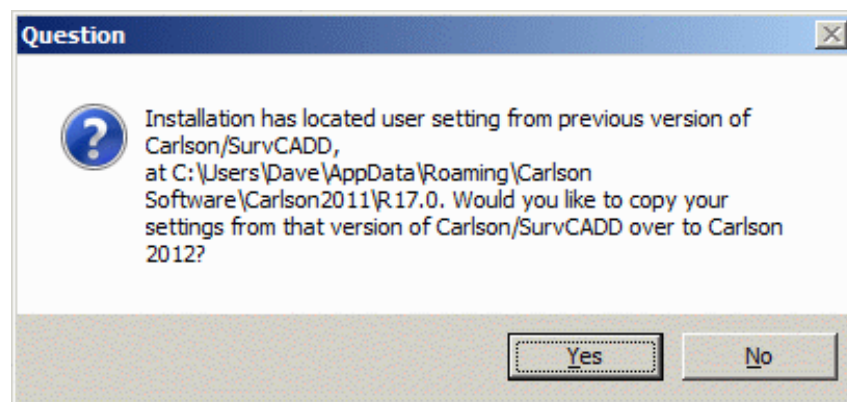


Most people will choose Full install. In the case of Remote install some of the program files will reside on the server location. To do a Remote Install, please run a Full install on the server, followed by Remote installs on workstations. This mode will NOT give you a network license though, and it is NOT required for people running a network license.

- Work and Data folders. Workgroups may choose to store their drawings and data files in the central location. Please specify where the program should look for files.
- You will be prompted for profile to use as a template. This is an optional input to be used when there is an existing company CAD profile you would like to use as a template for setting up a separate Carlson 2016 profile. Leave blank if there is no need in this feature.
- Review the installation options, and click "Next" to continue:



- In the course of your installation, you may get a prompt to carry over your settings if you had SurvCADD installed on your system. Please state your preference:



- At this point, installation will start. After all the files have been copied, you have to select which copy of AutoCAD you will be using, as you may have multiple AutoCAD verticals installed on the same system.
- If you see installation take long time without any apparent activity, please make sure any other applications on computer are shutdown. This delay is caused by component registration waiting for other applications to exit.
- Installation will create a separate shortcut on your desktop for each major component of the program.

Performing Silent (Scripted) Installation

Whenever an administrator needs to install several identical computers, it may be beneficial to install once recording all the input and then deploy the rest of the computers using the input recorded when installing on the first one.

Carlson is using InstallShield InstallScript engine which supports this feature in the following manner:

- Start command prompt and change to the drive letter corresponding to CD-ROM drive where Carlson disc is located
- Run Carlson install with additional switches like this:

```
setup.exe /r /f1c:\some_folder\setup.iss /f2c:\some_folder\setup.log
```

where /r designates recording, /f1 response file and /f2 log file. Please note lack of space after /f switches. Apparently simple paths with no special (non-alpha) characters are required.

- Copy setup.iss to location accessible on the network
- On the target machine, run the setup as the following

```
setup.exe /s /f1network_folder\setup.iss /f2c:\some_folder\setup.log
```

where /s designates silent install, /f1 pre-recorded response file and /f2 log file

- The install runs very stealthy and does not generate any messages. The log file will contain return code of 0 on successful install.

Please note that this method will use identical Carlson serial number on all the silently installed machines. This is correct in case of network license mode, but is not proper for standalone licenses. In that case, prior to registration, please navigate to Help, About Carlson, Change registration, remove scripted number and enter proper unique serial number assigned to the workstation. After that, the new number is OK to register.

Network License Server Installation

For network licensing server installation instructions, click [here](#) or go to the Knowledge Base at www.carlsonsw.com.

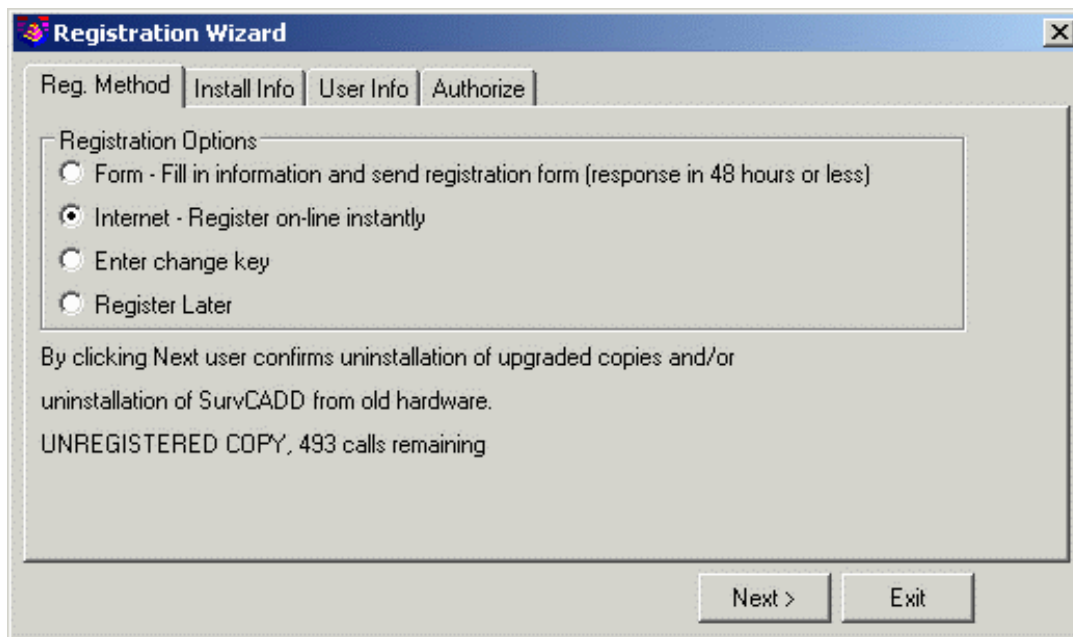
Running for the first time

When you launch the program for the first time, it will try to connect to the updates server, to see if any program updates has been posted since the CD was created. Unless you indicate otherwise, the program will do this on a weekly basis, to make sure that your Carlson product is up to date on fixes to all known problems.

Registration

IMPORTANT ! ALL INSTALLATIONS OF THIS SOFTWARE REQUIRE A UNIQUE SERIAL NUMBER. If you are running this software on more computers than you have purchased licenses for, you must buy additional copies.

Each Carlson program is licensed for use on **one** workstation which must be registered. The registration records your company name and AutoCAD serial number. To register your copy of Carlson, start Carlson and choose "Register Now". The following dialog will appear.



Note: Carlson Software will no longer issue change keys over the telephone. There are four registration options.

Fax: This method allows you to print out the required information on a form which you then fax to Carlson Software. The fax number is printed on the form. The change key will be faxed back to you within 72 hours.

Internet: Register automatically over the Internet. Your information is sent to a Carlson Software server, validated and returned in just a few seconds. If you are using a dial-up connection, please establish this connection before attempting to register.

Enter pre-authorized change key: If you originally chose the Fax method above, you will need to choose this method now to enter the change key that is faxed back to you.

Register Later: If you wish, you may defer registration up to 30 days. After this time, Carlson will enter demo mode which displays a message each time a Carlson command is run.

After you select the registration method, choose Next and select the type of installation you are performing. Choose Next again to review the copyright information and to fill out the required information. At this point, if you are using the Fax method, press the Print Fax Sheet button. If you are registering using the Internet method, press Next and the process will start.

If you have any problems with Internet registration, please repeat this process, and use the Fax method. There is more registration information on the Carlson Software website at <http://www.carlsonsw.com/registration.html>.

Tip: If Carlson is running, you may access the registration dialog by choosing *About Carlson* from the Help menu, then pick the Change Registration button. This also allows you to add additional serial numbers you purchased without reinstalling software. Each serial number requires separate registration.

Obtaining Technical Support

via Discussion Groups

- Carlson Software operates user discussion groups located at <http://update3.carlsonsw.com/forum/>. You can participate in user-to-user discussion on tips, tricks and problems. Our staff monitors these groups to ensure that all the issues are addressed. Visit our website at <http://www.carlsonsw.com> for information on how to access these groups.
- You may also access the Carlson Software Knowledge Base. Visit it directly at <http://www.carlsonsw.com/support/knowledge-base/>.

via Electronic Mail

- The Technical Support e-mail address is support@carlsonsw.com.

via Phone

- Phone: (606) 564-5028

via Web Site

Check the Carlson Software Web Site at <http://www.carlsonsw.com> for:

- Knowledge Base, discussion groups, technical support documents and newsletters
- Carlson Software manuals (PDF) and training movies
- Training and seminar schedules
- Step by step procedures on popular called-in topics
- Carlson Software and Autodesk downloads and updates (Feel free to register for automatic update notification of updates when you come to that area.)